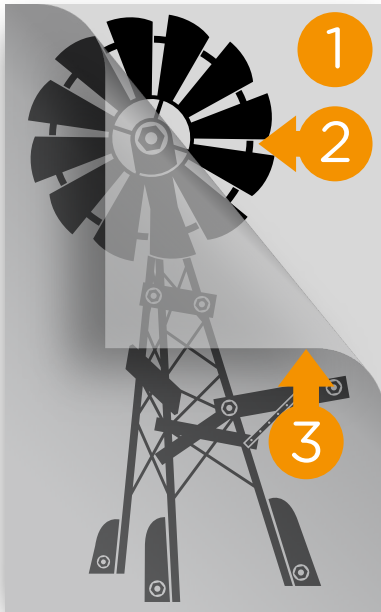


HOW TO APPLY A LARGE STICKER



- 1 White backing paper
- 2 Sticker
- 3 Transfer film/paper

Before you start to apply your sticker, take your time and be sure to thoroughly read all these application instructions first.

Although our stickers are easy to fit, it does require a little patience for larger items. Care needs to be taken when fitting your sticker as it is not a reusable items. They can more than likely be damaged because of a careless mistake.

Our stickers can be applied on even, smooth surfaces such as smooth walls, glass, windows, doors, tables, smooth metal, plastic surfaces, finished wood furniture, and in the bathrooms as well (bathtub, tiles, etc...), but not on rough walls, and more generally, on rough texture.

Before applying your stickers, the surface must be thoroughly cleaned to remove all dust, grit, grease or any obvious contaminants which will show up and spoil the final look of your design.

We recommend gloss and satin finish paint surfaces ; the stickers may not adhere well to some mat paints. Freshly painted walls should be allowed to dry for 2 weeks before proceeding.

Installation tools :



squeegee



masking tape



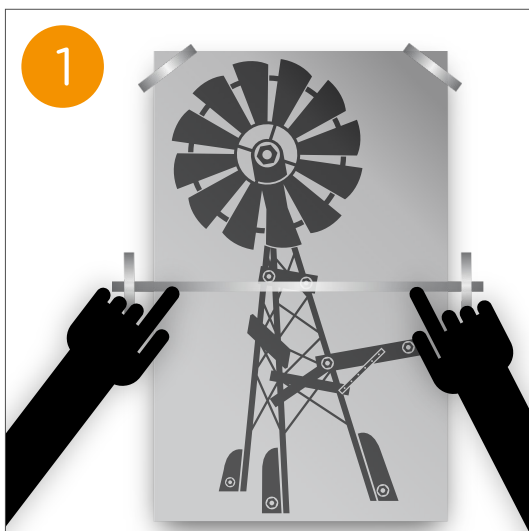
cutter / scissors

Applying a large sticker

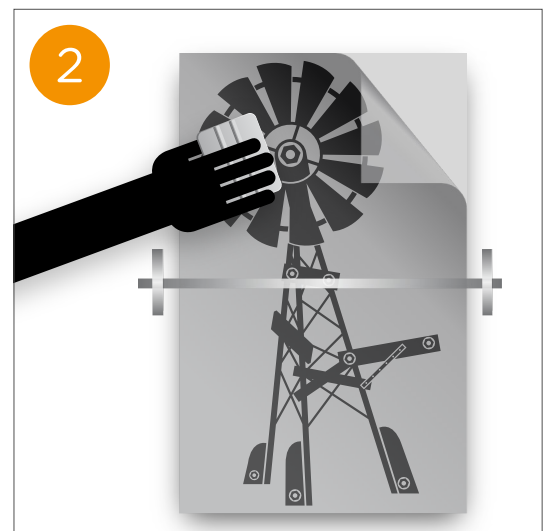


Please, take care that the sticky surfaces do not stick to each other. If not, they are impossible to get apart without damaging your sticker. So, ask for another hand(s) if the image is bigger than you can handle.

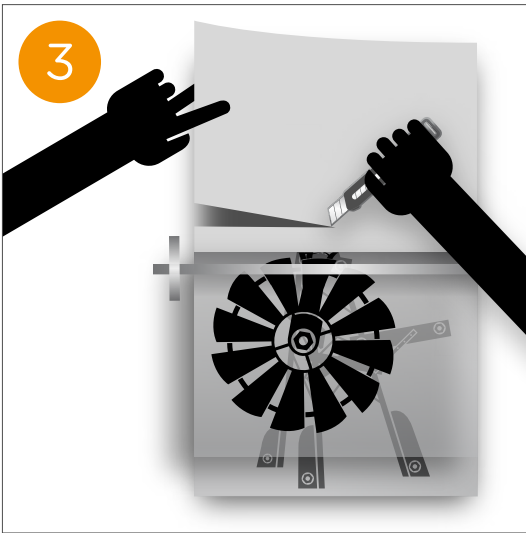
Make sure you wipe the surface well and leave to dry before proceeding. Then, take the scraper provided and rub it on the back of your sticker to allow the transfer film to reattach the vinyl wall sticker.



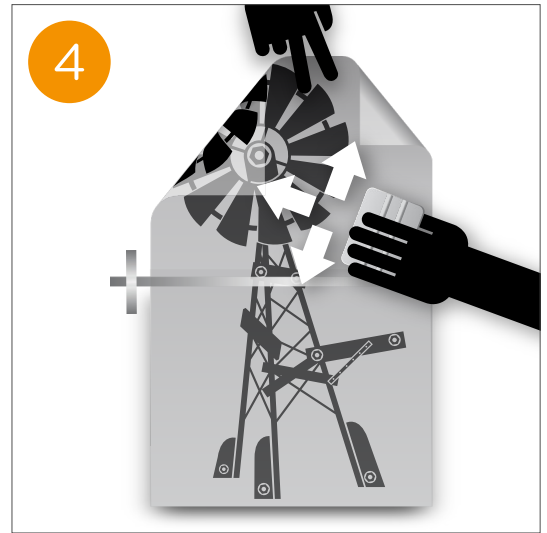
Position vinyl then masking tape onto surface. Tape wall sticker across the centre, making sure there is enough tape to hold onto the wall.



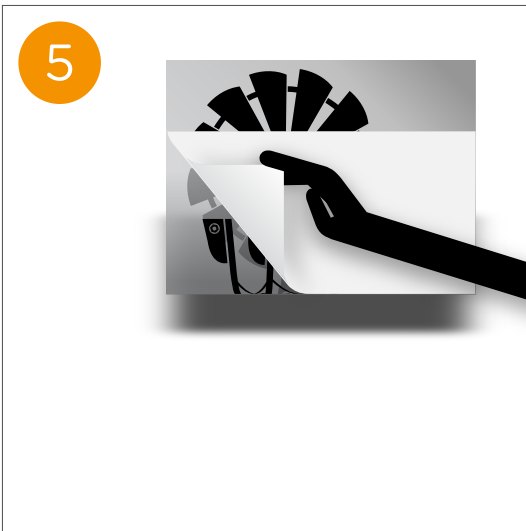
Untape top edge of sticker, carefully peel the backing paper to half way making sure all the graphic is on the clear transfer film. If the vinyl is stuck to the paper smooth the paper back onto the transfer film until it sticks.



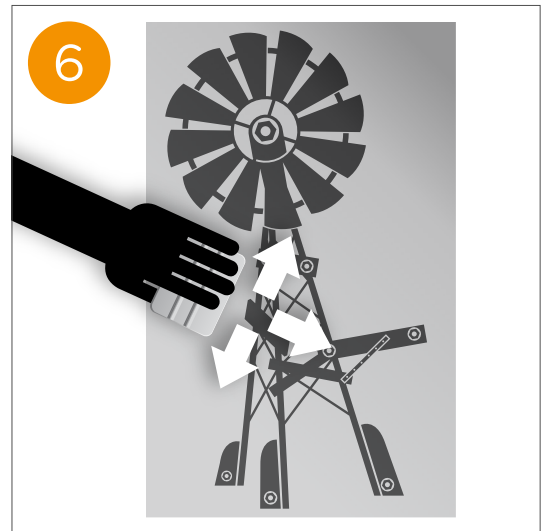
Trim the backing paper off at halfway so that the top part of the sticker can be applied to the wall. Remember vinyl is very sticky so keep the adhesive away from the wall or clothing.



Move the scraper upwards (from the halfway point) over the film at 45 degrees as you apply. Apply in a firm smooth motion so you don't get any air bubbles.



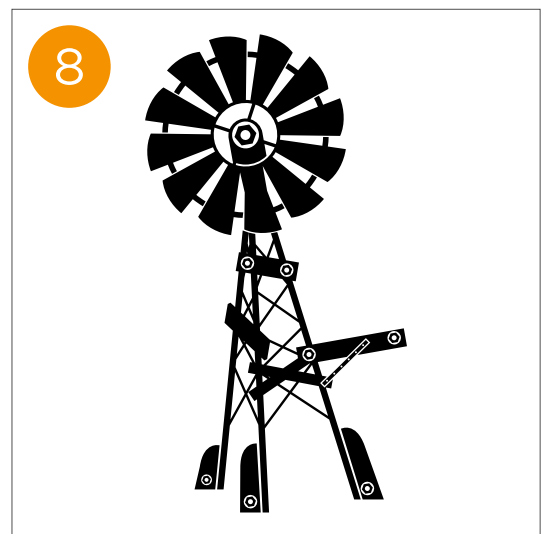
Once you have applied the top half, carefully peel the backing paper from the bottom half making sure all the graphic is on the transfer film/paper.



Move the scraper downwards (from the halfway point) over the film at 45 degrees as you apply. Apply in a firm smooth motion so you don't get any air bubbles.



Peel back the edge of transfer film and remove by pulling slowly and carefully away at 180 degrees to vinyl. Make sure non of the vinyl pulls up with the transfer film.



And now... enjoy living with your Decal Decoration sticker!